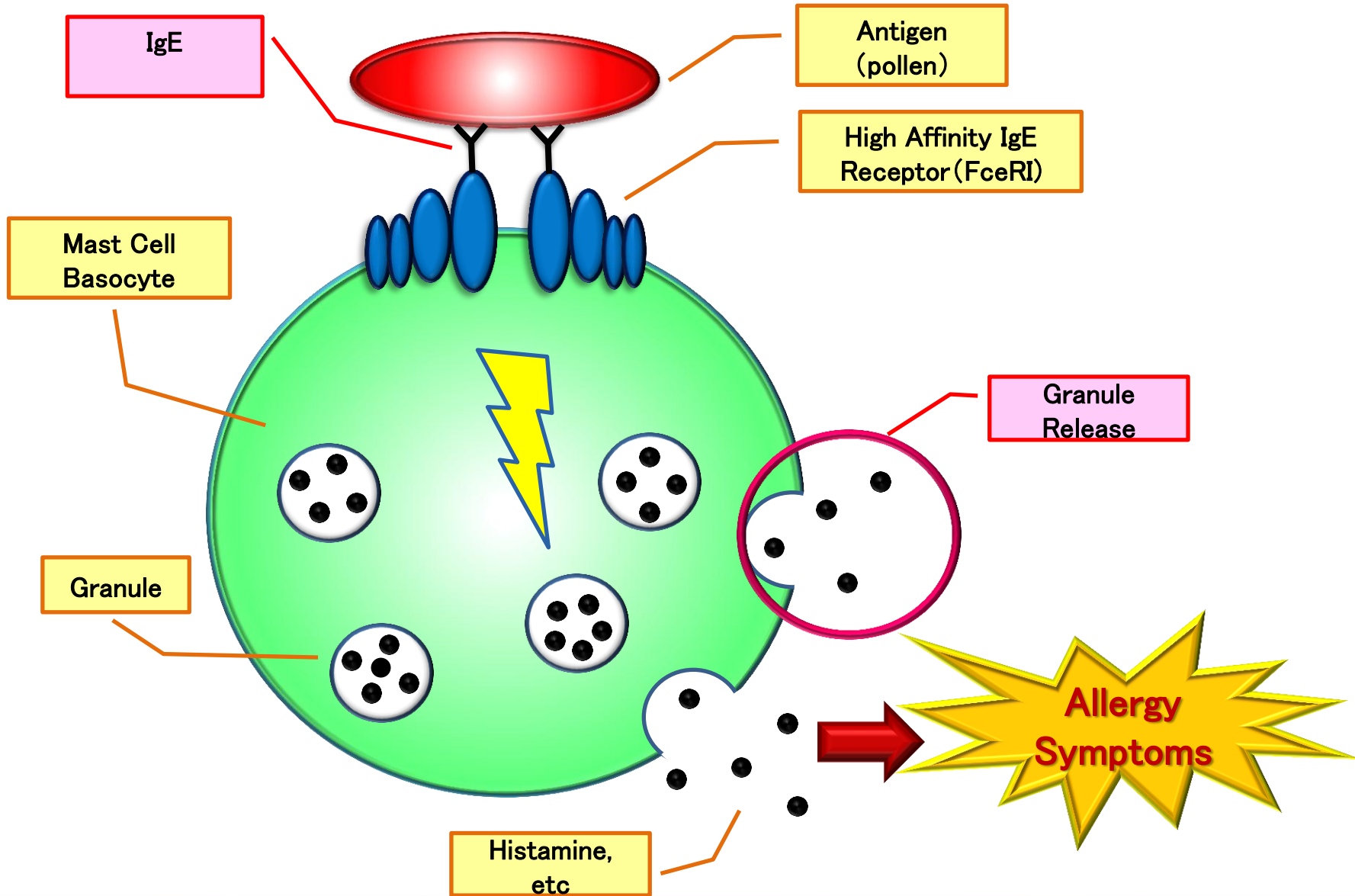


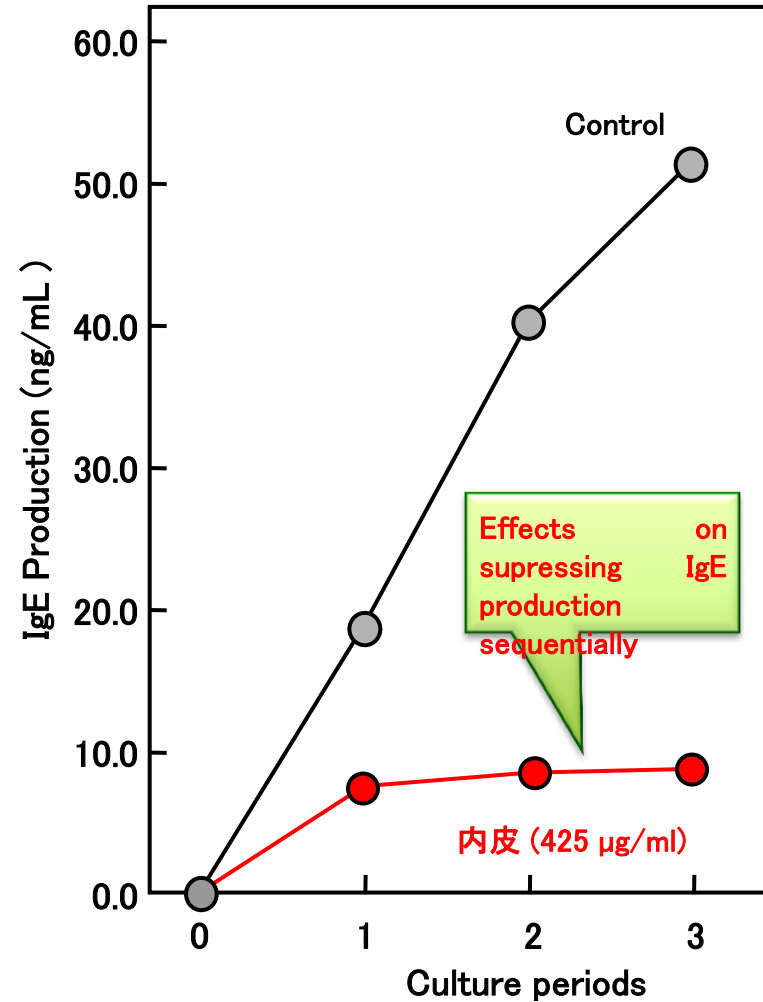
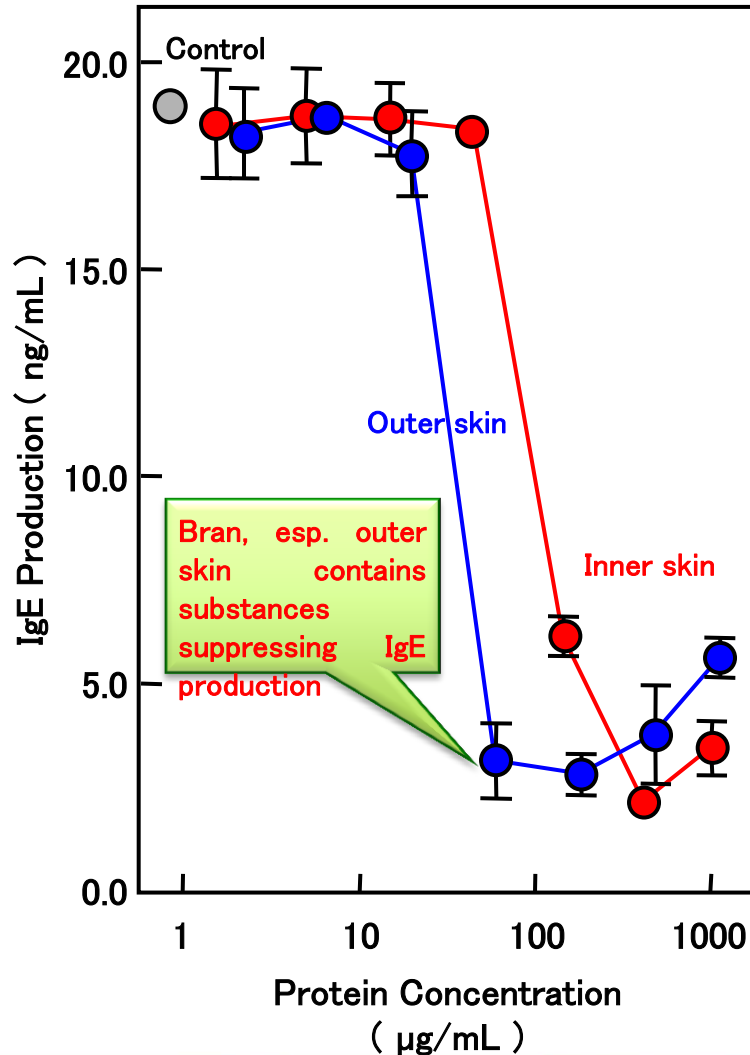
Anti-Allergy Effects of White Sorghum

**Ehime University
Dept. of Agriculture
Dr. Takuya Sugahara**

Structure of Allergy Onset



Effects of WS Bran on suppressing IgE Production

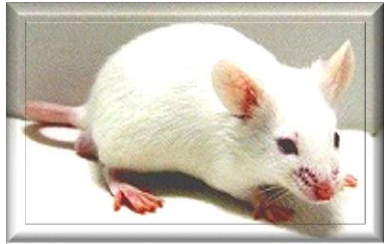


Oral Administration of WS Bran to Allergy sample mice

Oral administration of WS Bran Extracts ($\times 1$, $\times 1/20$)

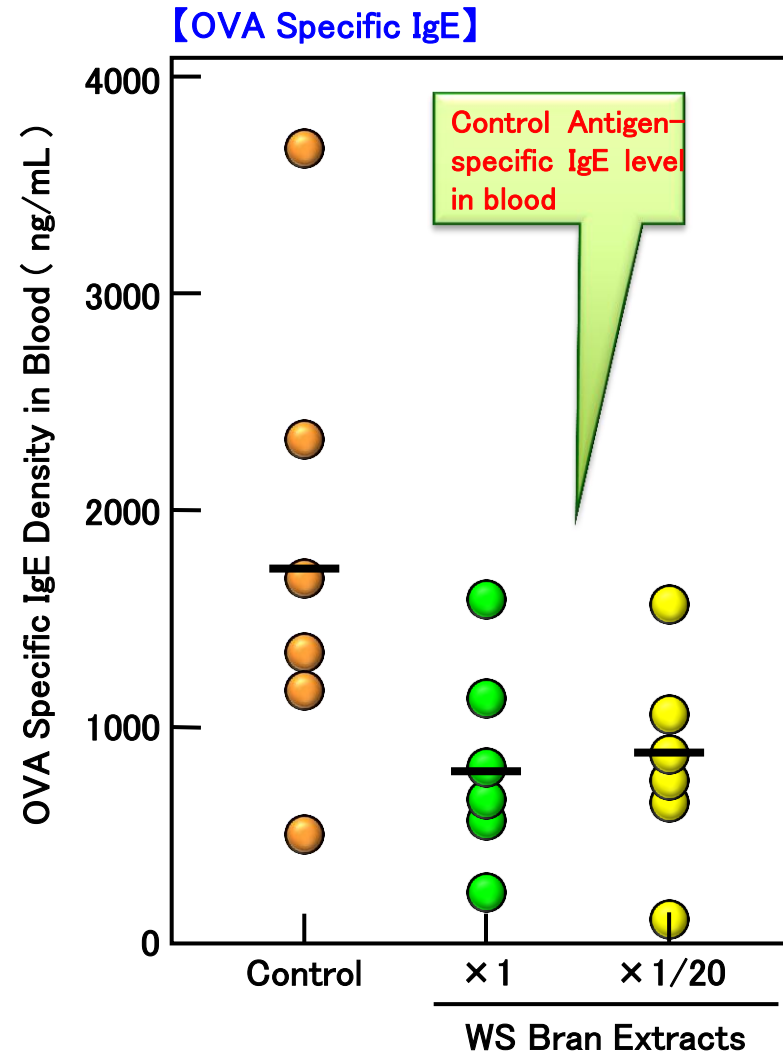
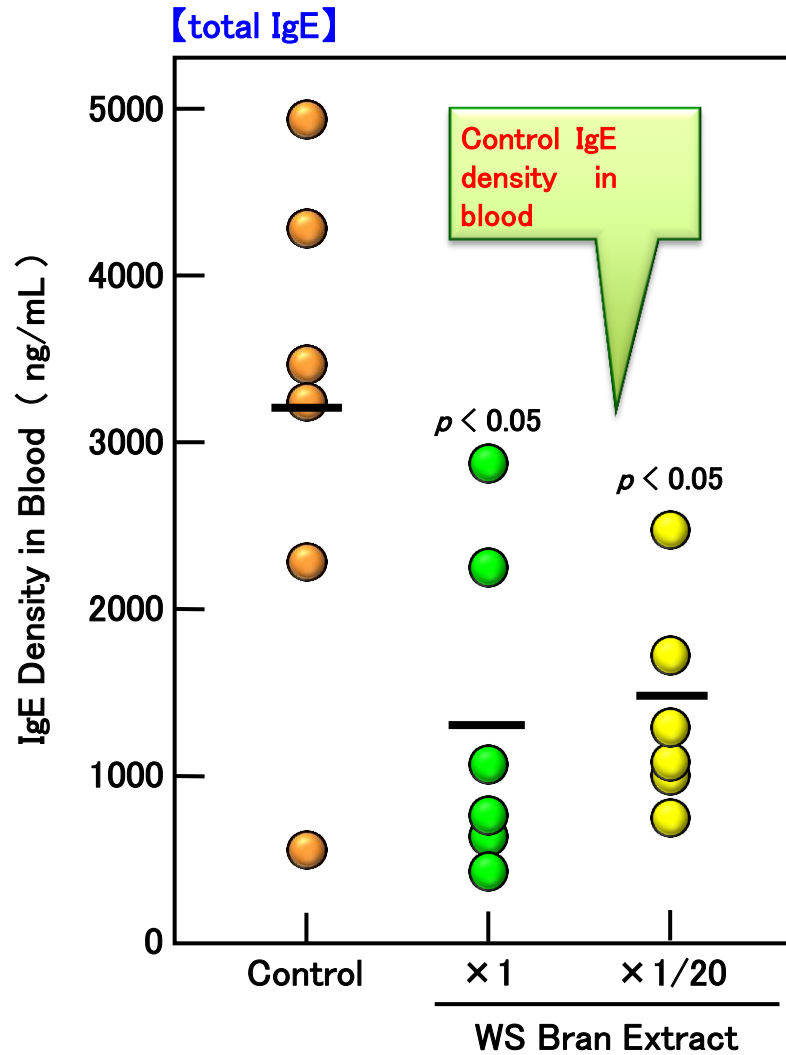


BALB/c mouse
female 6 wk old ♀
(n = 6)

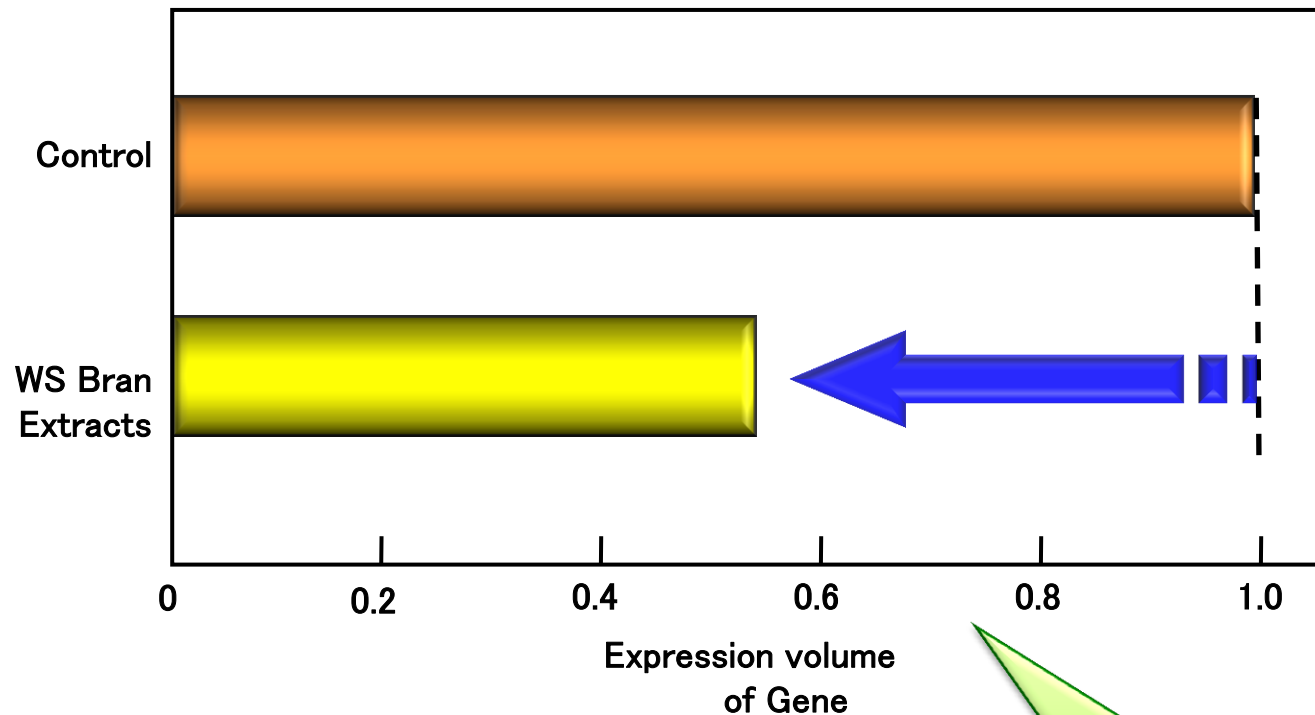


Serum collection
Spleen cell
collection

Effects of WS Bran Extracts on IgE density in blood



Effects on IgE Gene Expression in Spleen cell of Oral Administration of WS Bran



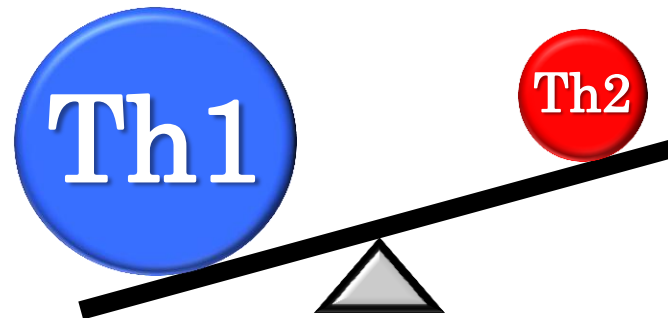
By suppressing expression of gene in spleen cell, IgE production is controlled.

Effects of Oral administration on Th1/Th2 balance

	Th1	Th2
Control	100	79
WS Bran Extracts	100	48 ↓

(%)

Th1 advantageous



Oral administration of WS bran extracts gave advantage to Th1, and improved allergy conditions

Effects of WS Bran on de-granulation Control

